

CHAMSA

# AQUAPRO

## AQUAPRO X

NUEVO

### + Resistant

Great resistance to tamponade

### + superior performance

The special design of the belt with the continuous labyrinth results in superior yields and uniformities.

### + Easy installation

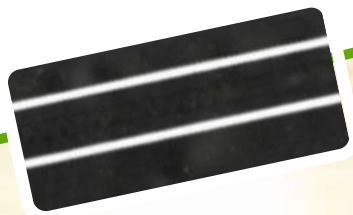
Its great versatility reduces installation times.

### + superfiltration

The version "AQUAPRO X" includes an advanced maze, designed for the toughest waters.

AQUAPRO

AQUAPRO X

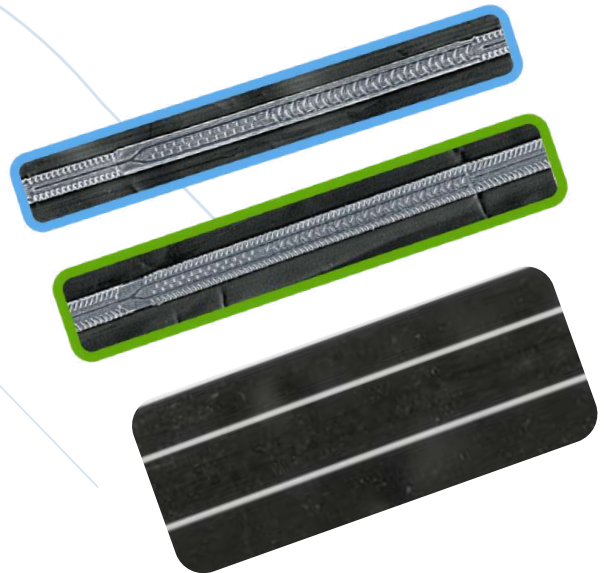


# CHAMSA AQUAPRO - AQUAPRO X

Design of a continuous labyrinth that provides great resistance to clogging, so there is a more rational use of water. The special design of the belt with a constant labyrinth results in a higher emitter performance and uniformity.

- Manufactured without welds for greater resistance.
- Emitters with great flow uniformity.
- Double water filtration through its 160 correctly positioned points.
- Micro opening that eliminates clogging and prevents Let the roots in.
- The design of the maze that causes great state-of-the-art turbulence. Available in a wide range of thicknesses,
- distance between emitters and flows.
- Double color line for better recognition and signaling of the emitters.
- Great resistance to tension and cracking.

- Abrasion resistant material, reduces damage caused by the terrain.
- Thanks to its versatility and accuracy, it is easy to install, reducing work times.
- Manufacturing and quality controls are as per DIN EN ISO 9261:2011.
- Manufactured by extrusion process granting a superior resistance, making this product even more durable, being resistant to abrasion mechanics for example.

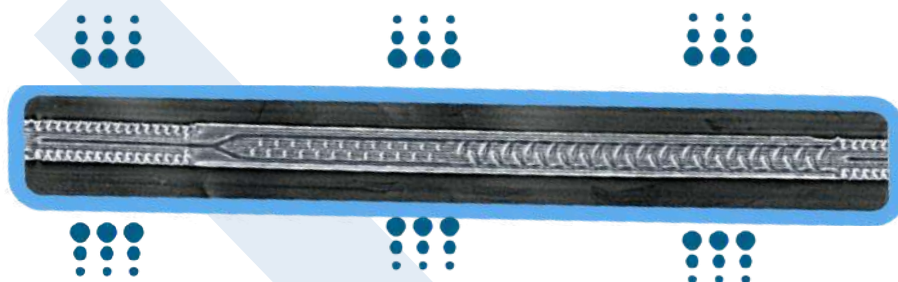


98%

UNIFORMITY  
GUARANTEED

## TECHNICAL DATA

Diameter (ø)	Wall thickness	Diameter inner (ID)	Diameter outer (DE)	Pressure of work	Maximum pressure and washing	Grade of minimal filtration
16mm	6mil (150mic)	16.1mm	16.4mm	0.7bar	0.9bar	100mic / 150 mesh
16mm	8mil (200mic)	16.1mm	16.5mm	0.7bar	1.0bar	100mic / 150 mesh
16mm	10mil (250mic)	16.1mm	16.6mm	0.7bar	1.4bar	100mic / 150 mesh
16mm	12mil (300mic)	16.1mm	16.7mm	0.7bar	2.0bar	100mic / 150 mesh



• Filtration  
Double filtration of water through your 110 points correctly designed.

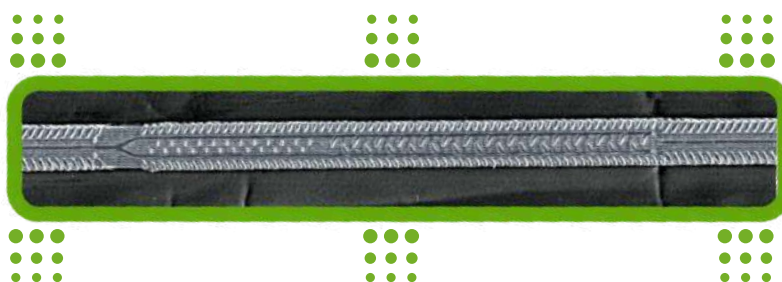
• Labyrinth  
Labyrinth constant of fluid control.

• emitters  
micro slot accurate.



- Filtration max fi water of m continue to 160 point

**AQUAPRO X**



- **Labyrinth**  
Unlike its predecessor, it contains a maze much more advanced thought specially for waters where the tapes are most at risk of clogging.

### AQUAPRO / AQUAPRO X TAPE APPLICATION LENGHT (in meters)

- Depending on the uniformity of the ground with a constant pressure of 0.7bar and for DN16 pipes

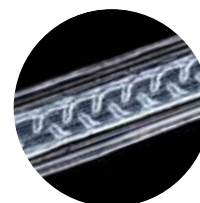
Emitter Flow	Uniformity	10cm	15cm	20cm	30cm	40cm
0,6 L/h	90%	140m	180m	210m	268m	320m
	85%	170m	220m	260m	335m	400m
1,0 L/h	90%	100m	125m	<b>150m</b>	190m	225m
	85%	125m	160m	185m	235m	280m
1.5L/h	90%	35m	45m	50m	65m	80m
	85%	75m	95m	115m	150m	180m

#### Use and selection

In these times where the conservation of water and resources are a key element, drip irrigation has great value. Installation is cheaper than traditional systems and uses much less water.

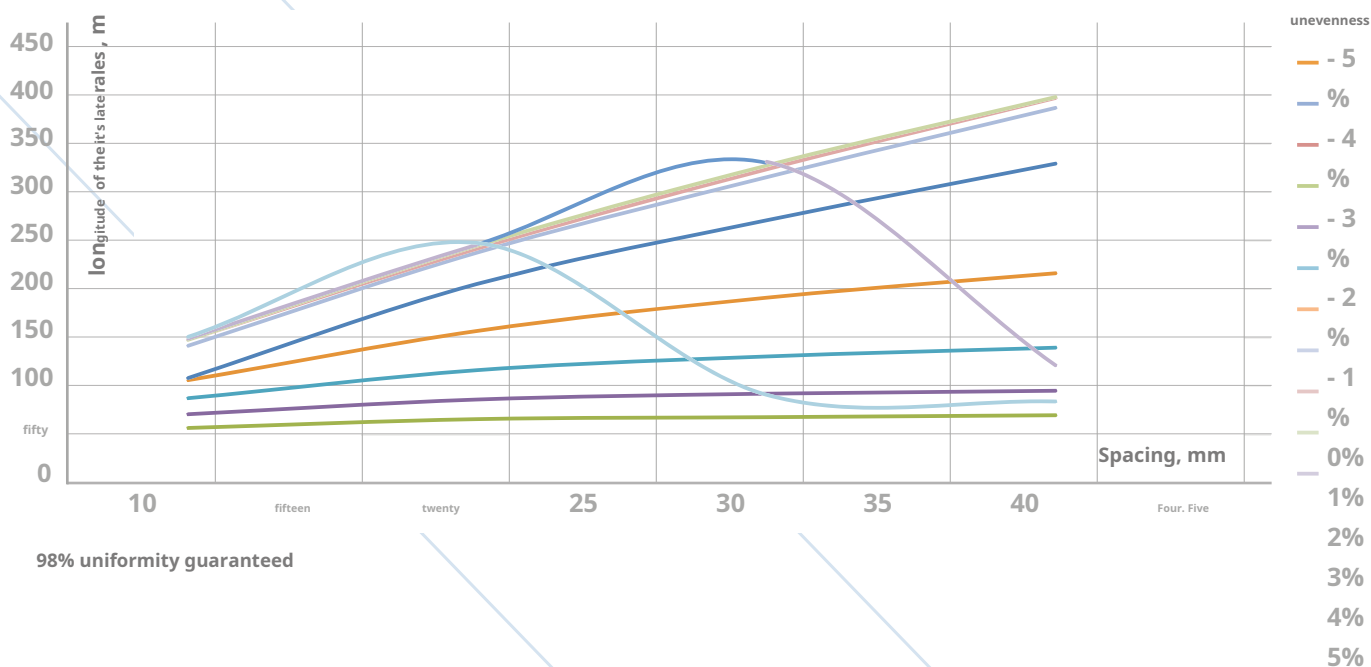
Product range:

- Light wall: Suitable for short crops and sandy soils without rocks.
- Medium wall: They are generally for medium conditions and long-harvest crops.
- Thick wall: They are designed for rocky soils and where insects can damage them. They are suitable for more than one campaign.



#### Length of the irrigation line according to the distance between emitters

Terrain inclination +/- 5%, uniformity 85%, pressure 0.7bar, ID 16mm.





## PRODUCTION RANGE

- The table shows the different thicknesses and spacing of emitters. There is the possibility of manufacturing this tape with some special requirement.
- The Pathfinder XPRO is available in 20 cm 1 liter spacing.

CODE	PRODUCT	Diameter Inside (ID)	Thickness (mil/mic)	distance between emitters	Flow L / Emitter	Flow L/ meters	Length roll
16060610	aquapro 6	16mm	6mil [150mic]	10cm	0.6l/h	6l/hr/m	3000m
16060615	aquapro 6	16mm	6mil [150mic]	15cm	0.6l/h	4l/hr/m	3000m
16060620	aquapro 6	16mm	6mil [150mic]	20cm	0.6l/h	3l/hr/m	3000m
16060630	aquapro 6	16mm	6mil [150mic]	30cm	0.6l/h	2l/hr/m	3000m
16080610	aquapro 6	16mm	8mil [200mic]	10cm	0.6l/h	6l/hr/m	2500m
16080615	aquapro 6	16mm	8mil [200mic]	15cm	0.6l/h	4l/hr/m	2500m
16080620	aquapro 6	16mm	8mil [200mic]	20cm	0.6l/h	3l/hr/m	2500m
16080630	aquapro 6	16mm	8mil [200mic]	30cm	0.6l/h	2l/hr/m	2500m
16061010	aquapro 10	16mm	6mil [150mic]	10cm	1.0l/h	10l/hr/m	3000m
16061015	aquapro 10	16mm	6mil [150mic]	15cm	1.0l/h	6.5l/hr/m	3000m
16061020	aquapro 10	16mm	6mil [150mic]	20cm	1.0l/h	5l/hr/m	3000m
16061030	aquapro 10	16mm	6mil [150mic]	30cm	1.0l/h	3.5l/hr/m	3000m
16081010	aquapro 10	16mm	8mil [200mic]	10cm	1.0l/h	10l/hr/m	2500m
16081015	aquapro 10	16mm	8mil [200mic]	15cm	1.0l/h	6.5l/hr/m	2500m
16081020	aquapro 10	16mm	8mil [200mic]	20cm	1.0l/h	5l/hr/m	2500m
16081030	aquapro 10	16mm	8mil [200mic]	30cm	1.0l/h	3.5l/hr/m	2500m
16061510	aquapro 15	16mm	6mil [150mic]	10cm	1.5l/h	15l/hr/m	3000m
16061515	aquapro 15	16mm	6mil [150mic]	15cm	1.5l/h	10l/hr/m	3000m
16061520	aquapro 15	16mm	6mil [150mic]	20cm	1.5l/h	7.5l/hr/m	3000m
16061530	aquapro 15	16mm	6mil [150mic]	30cm	1.5l/h	5l/hr/m	3000m
16081510	aquapro 15	16mm	8mil [200mic]	10cm	1.5l/h	15l/hr/m	2500m
16081515	aquapro 15	16mm	8mil [200mic]	15cm	1.5l/h	10l/hr/m	2500m
16081520	aquapro 15	16mm	8mil [200mic]	20cm	1.5l/h	7.5l/hr/m	2500m
16081530	aquapro 15	16mm	8mil [200mic]	30cm	1.5l/h	5l/hr/m	2500m



## EXPORT OFFICE

Ruiz de Alarcón, 27 - 1º Centro-28014  
 Madrid Spain  
 Phones +34 91 369 07 51  
 + 34 91 420 28 84 Fax. +34 91  
 420 04 01  
[export@grupochamartin.com](mailto:export@grupochamartin.com)